

WS Series™

LED Wet Location Linear Luminaire

Product Description

The versatile Cree WS Series wet location linear luminaire is suitable for indoor and outdoor applications.

Constructed of one-piece molded polycarbonate housing and injection molded, impact resistant, UV stabilised polycarbonate shielding, the Cree WS Series is wet location listed and water-tight sealed for IP65 rating, which provides protection from external elements. The operating temperature range is -25°C to 35°C, allowing for cold to hot weather environment installations.

Performance Summary

Delivered Light Output: 5100 lumens

Efficacy: Up to 100 LPW

CRI: Minimum 80 CRI

CCT: 3000K, 4000K

Input Voltage: 220-240V

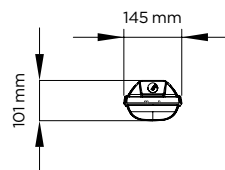
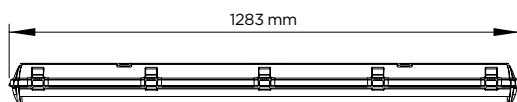
Lifetime: Designed to last 70,000 hours at 25°C

Limited Warranty*: 5 years

Dimensions: L 1283mm x W 145mm x H 101mm

Weight: 3 kg

Mounting: Surface or suspended



Accessories

Field Installed Accessories

SUSMOUNT
- Suspended mounting

Ordering Information

Example: WS-E-12-50-7

WS	E	12	50	7	D
Product	Version	Length	Lumen Output	Color temperature	Options
WS	E 220-240V	12 1,2m	50 52W 5000 lumens (40K) 40 38W 4000 lumens (40K)	7 4000K 3 3000K	D DALI C Continuous line - max. 25 luminaires per line S Stainless steel clips N Panel connector A Increased eff. lens

* See www.cree-europe.com/en/prodotti-gar.php for warranty terms



Product Specifications

CREE LED TECHNOLOGY

Cree's total systems approach to product development is a comprehensive engineering philosophy that combines the most advanced LED sources, driver technologies, optics and forms. The result is highly-reliable luminaire solutions for both indoor and outdoor applications that reduce energy use, extend lifetimes, and maximize illumination performance and quality.

CONSTRUCTION & MATERIALS

- Housing and diffuser constructed in polycarbonate
- PA6 (polyamide) latches.
- Mounting system built to enable IP65 protection

OPTICAL SYSTEM

- Cree LED Technology
- Injection molded polycarbonate translucent shielding for IK08 protection
- Polyurethane gasketing is poured in place, providing a continuous, seamless seal
- High-efficiency diffuser with high visual comfort (no pixelization)

ELECTRICAL SYSTEM

- **Power Factor:** > 0.93 @ 50% of nominal load
- **Input Power:** Stays constant over life
- **Input Voltage:** 220-240V
- **Temperature Rating:** Designed to operate in temperatures -25°C to 35°C
- **Total Harmonic Distortion:** < 20%

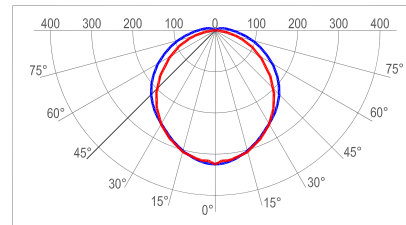
REGULATORY & VOLUNTARY QUALIFICATIONS

- CE listed
- IP65 rated

Photometry

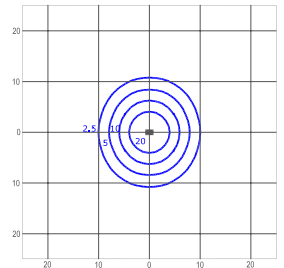
WS™

Fixture photometry has been conducted by a NVLAP accredited testing laboratory in accordance with IESNA LM-79-08. IESNA LM-79-08 specifies the entire luminaire as the source resulting in a fixture efficiency of 100%



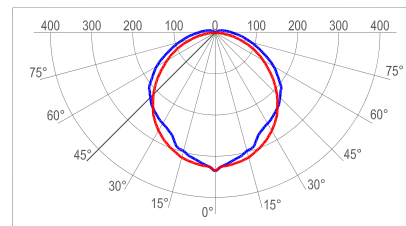
cd/klm
— C0 - C180 — C90 - C270

Test Report #: 16120-G



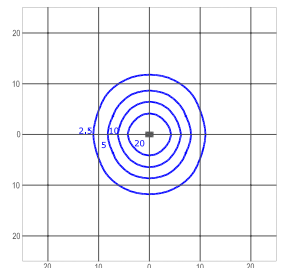
lux

WS-E-12-50-7
Mounting Height: 6m
Initial Delivered Lumens: 5007



cd/klm
— C0 - C180 — C90 - C270

Test Report #: 16152-G



lux

WS-E-12-50-7-A
Mounting Height: 6m
Initial Delivered Lumens: 5202

Reference www.cree-europe.com for detailed photometric data