

LEDway® Multi

IP66 Street Light - Mounting 4M - 180° - ACB (Type IV Medium w/ BLS)

Product Description

Luminaire housing is all aluminum construction. All components are mercury free and recyclable. Sharp profile for low wind exposure. Tooless entry. Mechanically solid and with an extremely strong build, this fixture is the ideal solution for industrial applications. The various different mounting systems available make this fixture extremely versatile and ideal for ceiling, busway and wall mounting installations.

Performance Summary

Utilizes BetaLED® Technology

Patented NanoOptic® Product Technology

CRI: Minimum 70 CRI

CCT: 5700K (+/- 500K) Standard, 4000K (+/- 300K)

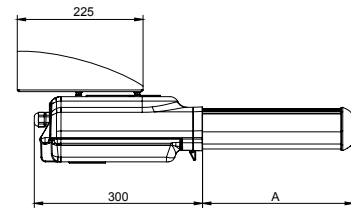
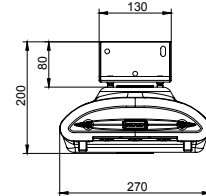
Warranty†:

Class 1 - 10 years on luminaire/10 years on Colorfast DeltaGuard® finish
Class 2 - 5 years on luminaire/10 years on Colorfast DeltaGuard® finish

Accessories and available mounting systems

Field Installed Accessories

BRDSPK30 Bird Spikes for Light Engine, 20-30 LEDs	PM-WLW Mounting for wall applications (180°)
BRDSPK60 Bird Spikes for Light Engine, 40-60 LEDs	
BRDSPK120 Bird Spikes for Light Engine, 80-120 LEDs	



LED Count	Dimension	Measurement	Weight
20	"A"	156mm	7,52kg
30		156mm	7,92kg
40		270mm	9,22kg
50		270mm	10,42kg
60		270mm	10,52kg
80		552mm	14,72kg
90		552mm	14,82kg
100		552mm	14,92kg
110		552mm	15,02kg
120		552mm	15,12kg

Ordering Information

Example: LXDACB4M02EGSV15

L	X	D	ACB	4M	O2	E	G	SV	I5
Product	Insulation Class	Model	Optic	Mounting	LED Count (x10)	Version	Options <i>(consult company for available options)</i>	Color Options*	Drive Current
LEDway	X Class 1 Y Class 2	D Multi	ACB Type IV Medium with Backlight Shield	4M	02 03 04 05 06 08 09 10 11 12	E	No code 5700K 43 4000K K# Light Control with Occupancy Sensor** - Flux dimming control with occupancy sensor D# Power Line Communication System (PLC) - Power line control system with dimmable driver G# Bi-Level Control - Two distinct power levels, High/Low D Dimmable Driver - Dimmable driver 1-10V with external controller S# Virtual Midnight - Two levels option with virtual midnight - Available up to 100 LEDs in class 1 - Available up to 60 LEDs in class 2 T# Reprogrammable Virtual Midnight - Reprogrammable 2 levels option with virtual midnight R# Flux Dimming - Integral dimming system with plants including flux regulators - Available up to 100 LEDs in class 1 - Available from 80 to 120 LEDs in class 2	SV Silver (Standard) BK Black BZ Bronze SB Silver Bronze WH White	No Code 700mA I5 525mA I3 350mA

* Light engine portion of extrusion is not painted and will remain natural aluminum regardless of color selection

† See www.cree.com/lighting for warranty terms

** Not available in Class 2



Rev. Date: 7 February 2014



Product Specifications

BETALED® TECHNOLOGY

LEDway® Multi luminaires are powered by BetaLED® Technology delivering outstanding illumination, lasting performance and optimum energy efficiency. Patented NanoOptic® technology optimizes target illumination, performance and offers flexibility with multiple optic choices. NanoOptic compliant with light pollution and photobiological safety standards.

CONSTRUCTION & MATERIALS

- Housing is all aluminum construction
- Designed with 1-10V dimming capabilities. Controls by others
- Available mounting system:
 - PM-WLW mounting for wall applications (180°)
- Exclusive Colorfast DeltaGuard® finish features an E-Coat epoxy primer with an ultradurable powder topcoat, providing excellent resistance to corrosion, ultraviolet degradation and abrasion. Standard is Silver. Bronze, Black, White, and Silver Bronze are also available

ELECTRICAL SYSTEM

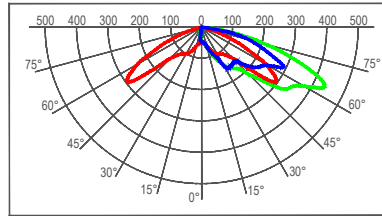
- **Input Voltage:** 220 - 240Vac (capable 120-277Vac, please consult company for available configurations) 50/60Hz
- **Power Factor:** > 0.9 at full load
- **Total Harmonic Distortion:** < 20% at full load

REGULATORY & VOLUNTARY QUALIFICATIONS

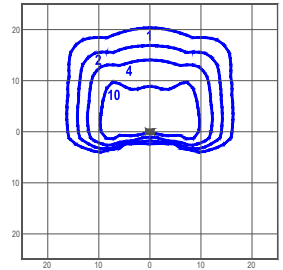
- CE Listed
- ENEC Listed only for class II
- Enclosure rated IP66 per IEC 60529
- 10kV surge suppression protection tested in accordance with IEEE/ANSI C62.41.2, for Class 1 only
- Luminaire and finish are endurance tested to withstand 5,000 hours of elevated ambient salt fog as defined in ASTM Standard B 117
- RoHS Compliant

Photometry

All published luminaire photometric testing performed to IESNA LM-79-08 standards by a NVLAP certified laboratory.



cd/klm
 — C0 - C180 — C90 - C270 — C55 - C235



lux

ITL Test Report #: 77233

LXDACB4M02E43
 Mounting Height: 6m
 Initial Delivered Lumens: 3005

IES Files

To obtain an IES file specific to your project, please consult www.cree-europe.com

Lumen Output, Electrical, and Lumen Maintenance Data

Effective Flux (lm) - ACB (Type IV Medium w/ Backlight Shield) Distribution								
LED Count (x10)	5700K		4000K		Total Current (A) 230V	50K Hours Projected Lumen Maintenance Factor @ 15°C (59°F)	L ₇₀ Life* (hours)	
	Delivered Lumens	Delivered Lumens	System Watts 220-240V					
350mA @ 25°C (77°F)								
02	1697	1647	25	0.13	94%	>150000		
03	2546	2470	35	0.17				
04	3394	3293	46	0.21				
05	4243	4116	56	0.27				
06	5092	4940	66	0.31				
08	6789	6586	89	0.42				
09	7638	7410	99	0.46				
10	8486	8233	108	0.52				
11	9335	9056	117	0.58				
12	10183	9879	126	0.62				
525mA @ 25°C (77°F)								
02	2444	2371	37	0.17			93%	149000
03	3666	3557	52	0.24				
04	4888	4742	70	0.30				
05	6110	5928	86	0.39				
06	7332	7113	99	0.45				
08	9776	9484	141	0.59				
09	10998	10670	157	0.65				
10	12220	11855	172	0.74				
11	13442	13041	187	0.83				
12	14664	14226	203	0.89				
700mA @ 25°C (77°F)								
02	3097	3005	49	0.23	91%	129000		
03	4646	4508	70	0.32				
04	6195	6010	91	0.40				
05	7744	7513	112	0.52				
06	9292	9015	132	0.60				
08	12390	12020	183	0.79				
09	13939	13523	203	0.86				
10	15487	15025	224	1.02				
11	17036	16528	243	1.12				
12	18585	18030	264	1.26				

* Based on fixture operating at 25°C

