

Cree Edge™ High Output

LED Area & Flood Luminaire
XAK Series - Adjustable Arm Mount - Optic A (N6)

Product Description

Cree Edge™ High Output luminaire is designed to deliver high lumen packages with precise optical control. Upgrade friendly unit features a slim, low profile design that minimizes wind load requirements and rugged die cast aluminum adjustable arm that mounts to a vertical 60-76mm O.D. minimum 95mm tall tenon. Also, available with Cree TrueWhite Technology, the Cree Edge High Output helps to beautifully render true colors and deliver value beyond energy savings.

Performance Summary

Utilizes BetaLED® Technology

Utilizes Cree TrueWhite® Technology on 5000K Luminaires

Patented NanoOptic® Product Technology

CRI: Minimum 70 CRI (4000K & 5700K); 90 CRI (5000K)

CCT: 5700K (+ / - 500K) Standard, 5000K (+ / - 300K), 4000K (+ / - 300K)

Limited Warranty†: 10 years on luminaire / 10 years on Colorfast DeltaGuard® finish

Accessories

Field Installed Accessories

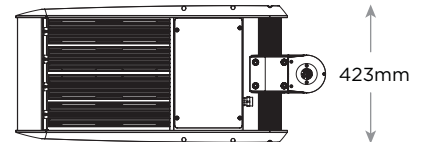
XA-BRDSPKXAK12
- Bird Spikes for 120 LED luminaires

XA-BRDSPKXAK24
- Bird Spikes for 240 LED luminaires



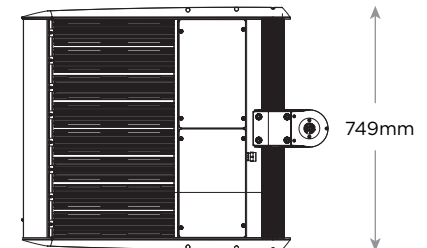
120 LED Luminaire

902mm

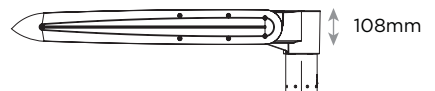


240 LED Luminaire

902mm



Side View



Ordering Information

Example: XAK3A12E+4DYT9

XAK	3	A	12	E	+	4	D	Y	T	9
Product	Mounting	Optic	LED Count (x10)	Series	Insulation Class	Voltage	Drive Current	Options	Color Options	Color Temperature
XAK	3 Adj Slip fitter Downlight	A (N6)	12 24	E	+	4 230V	D 700mA X 1A	Y 1-10V Dimming - Control by others	S Silver (Standard) T Black Z Bronze B Platinum Bronze W White	No code 5700K - Minimum 70 CRI 9 5000K - Minimum 90 CRI - Utilizes Cree TrueWhite® Technology 7 4000K - Minimum 70 CRI
	7 Adj Slip fitter Uplight									
	2 Adj Slip fitter Downlight - LEFT (relative to mounting)									
	C Adj Slip fitter Downlight - RIGHT (relative to mounting)									
	4 Adj Slip fitter Uplight - LEFT (relative to mounting)									
	F Adj Slip fitter Uplight - RIGHT (relative to mounting)									

† See www.cree-europe.com/en/prodotti-gar.php for warranty terms



Rev. Date: 21 March 2014



LED Area & Flood Luminaire
XAK Series - Adjustable Arm Mount - Optic A (N6)

Product Specifications

BETALED TECHNOLOGY®

Cree Edge™ High Output luminaires are powered by BetaLED® Technology delivering outstanding illumination, lasting performance and optimum energy efficiency. Patented NanoOptic® product technology optimizes target illumination, performance and offers flexibility with over 20 optic choices.

CONSTRUCTION & MATERIALS

- Slim, low profile, minimizing wind load requirements
- Luminaire sides are rugged die cast aluminum with integral, weathertight LED driver compartments and high performance heat sinks
- Adjustable mounting arm is rugged die cast aluminum and mounts to 60-76mm O.D. minimum 95mm tall vertical tenon
- Extruded aluminum adjustable mounting shaft
- Luminaire is adjustable from horizontal 90° towards pole and 120° away from pole
- Exclusive Colorfast DeltaGuard® finish features an E-Coat epoxy primer with an ultra-durable powder topcoat, providing excellent resistance to corrosion, ultraviolet degradation and abrasion. Standard is Silver. Bronze, Black, White, and Platinum Bronze are also available

ELECTRICAL SYSTEM

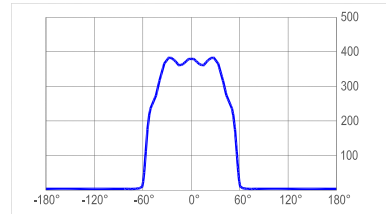
- **Input Voltage:** 120-277V, 50/60Hz
- **Power Factor:** > 0.9 at full load
- **Total Harmonic Distortion:** < 20% at full load
- Integral 10kV surge suppression protection standard
- To address inrush current, slow blow fuse or type C/D breaker should be used

REGULATORY & VOLUNTARY QUALIFICATIONS

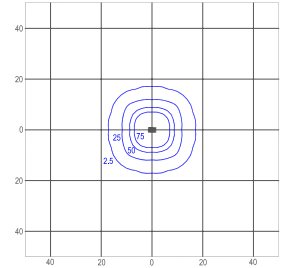
- CE Listed
- Enclosure rated IP65 per IEC 60529
- Certified to ANSI C136.31-2001, 3G bridge and overpass vibration standards
- 10kV surge suppression protection tested in accordance with IEEE/ANSI C62.41.2
- Luminaire and finish are endurance tested to withstand 5,000 hours of elevated ambient salt fog conditions as defined in ASTM Standard B 117

Photometry

All published luminaire photometric testing performed to IESNA LM-79-08 standards by a NVLAP certified laboratory.



cd/klm
— CO - C180 — C90 - C270 — C45 - C225



lux

ITL Test Report #: 78562

XAK3A12E+4X**7
Mounting Height: 10m
Initial Delivered Lumens: 38110

IES Files

To obtain an IES file specific to your project, please consult www.cree-europe.com

Weight and Maximum Wind Area

LED Count (x10)	Weight	Lateral Surface Wind Exposed
12	20.4kg	0.13 m ²
24	36.3kg	

Lumen Output, Electrical, and Lumen Maintenance Data

A (N6) Distribution						
LED Count (x10)	5700K	5000K	4000K	System Watts 120-277V	TOTAL CURRENT (A)	50K Hours Projected Lumen Maintenance Factor @ 15° C (59° F)***
	Initial Delivered Lumens*	Initial Delivered Lumens*	Initial Delivered Lumens*		230V	
700mA @ 25° C (77° F)						
12	28676	22033	27820	267	1.25	91%
24	57352	44067	55640	533	2.53	
1000mA @ 25° C (77° F)						
12	39282	30183	38110	416	1.90	86%
24	78564	60366	76219	831	3.79	

* Effective flux. Actual production yield may vary between -4 and +10% of initial delivered lumens.

*** For recommended lumen maintenance factor data see TD-13. Calculated L70 based on 6,000 hours LM-80-08 testing: > 150,000 hours.

