

# Cree Edge™ High Output

LED Area & Flood Luminaire  
XAK Series - Direct/Surface Mount - Optic Q (AF)

## Product Description

Cree Edge™ High Output luminaire is designed to deliver high lumen packages with precise optical control. Upgrade friendly unit features a slim, low profile design that minimizes wind load requirements. Luminaire mounts directly to 127mm or larger customer-drilled square poles using M8x30 mounting hardware and anchor plate provided. Luminaire can also be surface-mounted and wired by removing two available NPT plugs and mounted directly to vertical or horizontal surfaces. Also, available with Cree TrueWhite Technology, the Cree Edge High Output helps to beautifully render true colors and deliver value beyond energy savings.

## Performance Summary

Utilizes BetaLED® Technology

Utilizes Cree TrueWhite® Technology on 5000K Luminaires

Patented NanoOptic® Product Technology

**CRI:** Minimum 70 CRI (4000K & 5700K); 90 CRI (5000K)

**CCT:** 5700K (+ / - 500K) Standard, 5000K (+ / - 300K), 4000K (+ / - 300K)

**Limited Warranty†:** 10 years on luminaire / 10 years on Colorfast DeltaGuard® finish

## Accessories

### Field Installed Accessories

**XA-BRDSPKXAK12**

- Bird Spikes for 120 LED luminaires

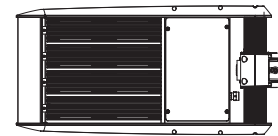
**XA-BRDSPKXAK24**

- Bird Spikes for 240 LED luminaires



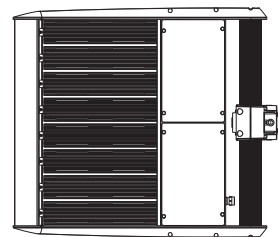
**120 LED Luminaire**

876mm



423mm

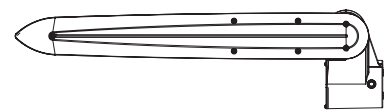
**240 LED Luminaire**



749mm

876mm

**Side View**



235mm

## Ordering Information

Example: XAKDQ12E+4DYT9

XAK	D	Q	12	E	+	4	D	Y	T	9
Product	Mounting	Optic	LED Count (x10)	Series	Insulation Class	Voltage	Drive Current	Options	Color Options	Color Temperature
<b>XAK</b>	<b>D</b> Direct/Surface mount Downlight	<b>Q</b> (AF)	<b>12</b> <b>24</b>	<b>E</b>	<b>+</b> Class I	<b>4</b> 230V	<b>D 700mA</b> <b>X 1A</b>	<b>Y 1-10V Dimming</b> - Control by others	<b>S</b> Silver (Standard) <b>T</b> Black <b>Z</b> Bronze <b>B</b> Platinum <b>W</b> White	<b>No code 5700K</b> - Minimum 70 CRI <b>9 5000K</b> - Minimum 90 CRI - Utilizes Cree TrueWhite® Technology <b>7 4000K</b> - Minimum 70 CRI
	<b>U</b> Direct/Surface mount Uplight									
	<b>5</b> Direct/Surface mount Downlight - LEFT (relative to mounting)									
	<b>A</b> Direct/Surface mount Downlight - RIGHT (relative to mounting)									
	<b>6</b> Direct/Surface mount Uplight - LEFT (relative to mounting)									
	<b>B</b> Direct/Surface mount Uplight - RIGHT (relative to mounting)									

† See [www.cree-europe.com/en/prodotti-gar.php](http://www.cree-europe.com/en/prodotti-gar.php) for warranty terms



Rev. Date: 21 March 2014



LED Area & Flood Luminaire  
XAK Series - Direct/Surface Mount - Optic Q (AF)

**Product Specifications**

**BETALED TECHNOLOGY\***

Cree Edge™ High Output luminaires are powered by BetaLED® Technology delivering outstanding illumination, lasting performance and optimum energy efficiency. Patented NanoOptic® product technology optimizes target illumination, performance and offers flexibility with over 20 optic choices.

**CONSTRUCTION & MATERIALS**

- Slim, low profile, minimizing wind load requirements
- Luminaire sides are rugged die cast aluminum with integral, weathertight LED driver compartments and high performance heat sinks
- Comes with two NPT plugs for surface wiring
- Extruded aluminum adjustable mounting shaft
- Luminaire is adjustable 90° up from horizontal in 5° increments
- Exclusive Colorfast DeltaGuard® finish features an E-Coat epoxy primer with an ultra-durable powder topcoat, providing excellent resistance to corrosion, ultraviolet degradation and abrasion. Standard is Silver. Bronze, Black, White, and Platinum Bronze are also available

**ELECTRICAL SYSTEM**

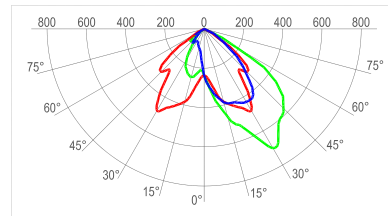
- **Input Voltage:** 120-277V, 50/60Hz
- **Power Factor:** > 0.9 at full load
- **Total Harmonic Distortion:** < 20% at full load
- Integral 10kV surge suppression protection standard
- To address inrush current, slow blow fuse or type C/D breaker should be used

**REGULATORY & VOLUNTARY QUALIFICATIONS**

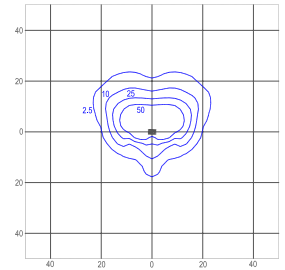
- CE Listed
- Enclosure rated IP65 per IEC 60529
- Certified to ANSI C136.31-2001, 3G bridge and overpass vibration standards
- 10kV surge suppression protection tested in accordance with IEEE/ANSI C62.41.2
- Luminaire and finish are endurance tested to withstand 5,000 hours of elevated ambient salt fog conditions as defined in ASTM Standard B 117

**Photometry**

All published luminaire photometric testing performed to IESNA LM-79-08 standards by a NVLAP certified laboratory.



cd/klm  
— C0 - C180    — C90 - C270    — C22 - C202



lux

ITL Test Report #: 78579

XAKDQ12E+4X\*\*7  
**Mounting Height:** 10m  
**Initial Delivered Lumens:** 36341

**IES Files**

To obtain an IES file specific to your project, please consult [www.cree-europe.com](http://www.cree-europe.com)

**Weight and Maximum Wind Area**

LED Count (x10)	Weight	Lateral Surface Wind Exposed
12	20.4kg	0.13 m <sup>2</sup>
24	36.3kg	

**Lumen Output, Electrical, and Lumen Maintenance Data**

Q (AF) Distribution									
LED Count (x10)	5700K		5000K		4000K		System Watts 120-277V	TOTAL CURRENT (A) 230V	50K Hours Projected Lumen Maintenance Factor @ 15°C (59°F)***
	Initial Delivered Lumens*	BUG Ratings** Per TM 15 11	Initial Delivered Lumens*	BUG Ratings** Per TM 15 11	Initial Delivered Lumens*	BUG Ratings** Per TM 15 11			
<b>700mA @ 25°C (77°F)</b>									
12	27345	B3 U0 G2	21011	B3 U0 G1	26529	B3 U0 G2	267	1.25	91%
24	54690	B4 U0 G2	42022	B4 U0 G2	53058	B4 U0 G4	533	2.53	
<b>1000mA @ 25°C (77°F)</b>									
12	37459	B4 U0 G2	28782	B3 U0 G2	36341	B4 U0 G2	416	1.90	87%
24	74918	B5 U0 G3	57564	B4 U0 G2	72682	B5 U0 G3	831	3.79	

\* Effective flux. Actual production yield may vary between -4 and +10% of initial delivered lumens.

\*\* For more information on the IES BUG (Backlight-Uplight-Glare) Rating visit [www.iesna.org/PDF/Erratas/TM-15-11BugRatingsAddendum.pdf](http://www.iesna.org/PDF/Erratas/TM-15-11BugRatingsAddendum.pdf). Valid with no tilt.

\*\*\* For recommended lumen maintenance factor data see TD-13. Calculated L70 based on 6,000 hours LM-80-08 testing: > 150,000 hours.