

Cree® XSPM

New XSP Series LED Street/Area Luminaire



A BRAND NEW SOLUTION COMPLETING THE RANGE WITH INCREASED LUMEN OUTPUT AND PERFORMANCE.

Growing up means knowing how to do the hard things.

High quality construction materials have been used to guarantee the utmost performance in terms of resistance to corrosion and reliability through time. An advanced thermal design led to increase the dissipating surface of about +30% compared to the actual XSPR allowing to reach higher lumen output and efficacy completing the XSP Series offer through a comprehensive program. Featuring the advanced Cree® LED technology, the XSPM offers state-of-the-art control capabilities and exceptional energy efficiency and performance.

It is equipped with Cree's NanoOptic® Precision Delivery Grid™ optic system, XSPM achieves better optical control than traditional street lighting fixtures, and efficiently delivers white uniform light that keeps pedestrians and drivers visible and safe at night.

CREE 

Cree XSPM™ - Efficiently delivers uniform light for safer-feeling communities.

Designed from the ground up as a totally optimized LED street lighting system, XSPM maintains the familiar look of the traditional cobrahead design and delivers substantial energy savings while reducing maintenance time and costs. Equipped with our NanoOptic® Precision Delivery Grid™ optic, XSPM achieves better optical control than traditional street lighting fixtures and efficiently delivers white uniform light for safer-feeling communities. The luminaire is designed to mount directly to 76mm or 60mm outer dimension tenons or poles with a specific spigot (adjustable arm).

PERFORMANCE SUMMARY

NanoOptic® Precision Delivery Grid™ optic

Input Power: A = 58W, B / C = 42W

CRI: Minimum 70 CRI

Initial Colour Consistency: 4 steps MacAdam

Input Voltage: 220-240V

Limited Warranty: Class 1 - 10 years on luminaire/10 years on Colorfast DeltaGuard® finish
Class 2 - 5 years on luminaire/10 years on Colorfast DeltaGuard® finish

Lifetime: Designed to last 100,000 hours

Mounting: Adjustable Arm for horizontal/vertical tenons

CONSTRUCTION & MATERIALS

- Die cast aluminum housing with UV stabilized Makrolon® door for long weathering and reliability
- Tool-less entry
- Luminaire is designed to mount directly to 76mm or 60mm outer dimension tenons or poles and can be tilted +/- 20°, in steps of 5°
- Exclusive Colorfast DeltaGuard® finish features an E-Coat epoxy primer with an ultra-durable powder topcoat, providing excellent resistance to corrosion, ultraviolet degradation and abrasion
- Standard colour Silver
- Control options: Field Adjustable Output, DALI, Virtual Midnight and Virtual Midnight Chronostep, Flux Regulator, Lineswitch, Dynadimmer, Constant Lumen Output

CREE LED LIGHTING TECHNOLOGY



NanoOptic® Technology

With patented NanoOptic® Technology available in multiple distributions, Cree® XSPM provides precise optical control for exceptional application performance and energy savings.

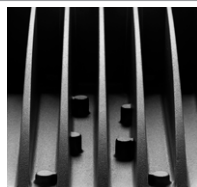
The NanoOptic® refractor system offers more lumens delivered in the target area, improved uniformity ratios and controlled high-angle brightness.



Nema Socket Option

XSPM is can be built with a standard Nema Socket option making the fixture compatible with additional external sensors to be used within the Smart City scenario.

The Cree NEMA 7-pin receptacle is a two-piece rotational receptacle with seven conductors.



Thermal control

The thermal management in the fixture allows it to work with perfect efficiency, safe from the damaging effects that excessive heat can have on LEDs. XSPM guarantees a lifetime of over 100.000hrs.

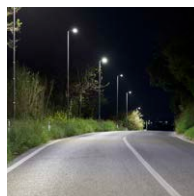


Easy access

The front door made of Makrolon®, a Bulk molding compound, is lighter to manage during the installation phase.

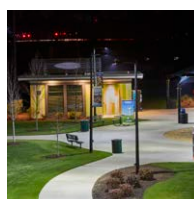
It also makes it possible to install internal nodes within the fixture as the wires transmission will not be stopped by the material characteristics.

APPLICATIONS



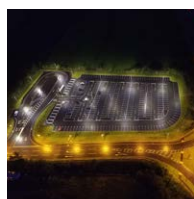
Street & Roadway Lighting

Cree® LED luminaires contribute to a healthy bottom line by reducing energy consumption, maintenance costs and the carbon footprint while keeping pedestrians and vehicles visible and safe at night.



Municipal & Residential Lighting

Upgrade municipal lighting in streets, parking lots, walkways and common areas will help keep your operating and maintenance budget in check and will provide dramatically better visibility — making public areas safe and secure.

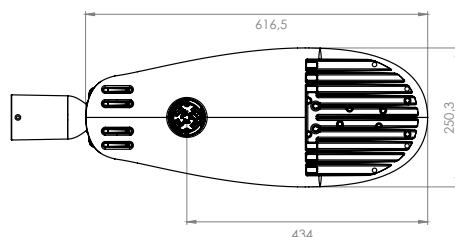
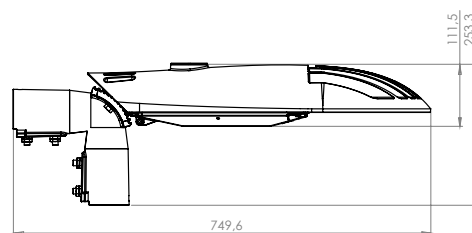


Car Park Lighting

Installing Cree® LED lighting in your car park enhances your brand and reduces total cost of ownership and the carbon footprint, while providing a more inviting shopping experience for customers.

XSPM DIMENSIONS

- Weight: 7 Kg



Visit www.cree-europe.com or contact Cree Europe Customer Service to learn more.

info.europe@cree.com | +39 055 343081

© 2017 Cree, Inc. All rights reserved. For informational purposes only. Not a warranty or specification. See lighting.cree.com/warranty for warranty and specifications. Cree®, NanoOptic®, and Colorfast Deltaguard® are registered trademarks, and the Cree logo, Precision Delivery Grid™, XSP1™, XSP2™ and XSPR™ are trademarks of Cree, Inc. Rev. Date: 12/07/17

